

RESEARCH FATIGUE in Energy Boomtowns

[S]ometimes you just wonder do any of these survey organizations talk to each other? [*someone in background says “uh huh” and everyone laughs*]

We’ve all been inundated with research. We know that’s a problem.

...often times you never see the results from those surveys ...

Comments collected in a June 2017 focus group with local government and community members (n-8) in a Montana energy boomtown

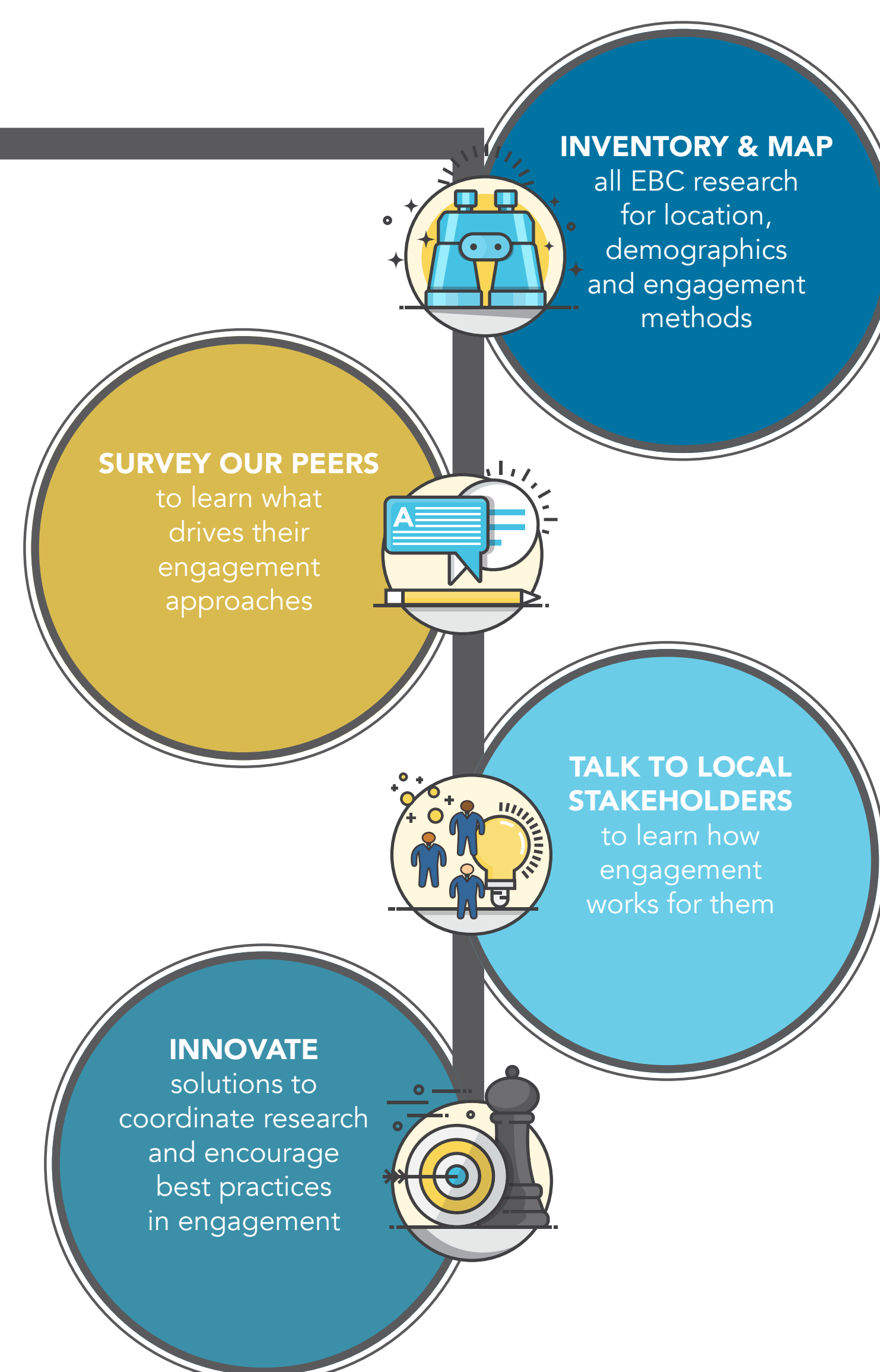


In many energy boom communities (EBCs), a research and media “rush” has accompanied the actual construction boom. In the absence of coordination of research activities across different universities, NGOs and other institutions, this research rush poses a number of serious problems including: hassle and unintended **stress on already stressed community members**, **inefficient research investments**, and **uneven sampling** of demographics and locations.

Energy fatigue and its correlaries are a subset of problems affecting the quality and impact of rural social science more broadly. When we take research fatigue in our own work seriously, we create potential to learn about the sources of public distrust of research and universities and to identify solutions to diminishing access to reliable data.

We have proposed a new project focused on documenting, assessing and intervening in this issue. **Ask us about our plans**, shown in the flowchart on the right. We need your participation. You can start by interacting with the survey questions on the far right of this poster.

a collective action
strategy



...share your thoughts

USE THE STICKERS TO RECORD YOUR ANSWERS TO 1-3

1. Research fatigue is a problem in communities where I conduct research.

disagree neutral agree

2. Media fatigue is a problem in communities where I do research.

disagree neutral agree

3. I would be willing to coordinate with other researchers and institutions to avoid duplication of sampling and improve community engagement.

disagree neutral agree

4. When you conduct research in energy boom communities what is the reaction by your research subjects?

please write in your answer

Kristin Smith & Julia Haggerty
Montana State University



This effort has support from USDA NIFA (Project #2014-05498).